



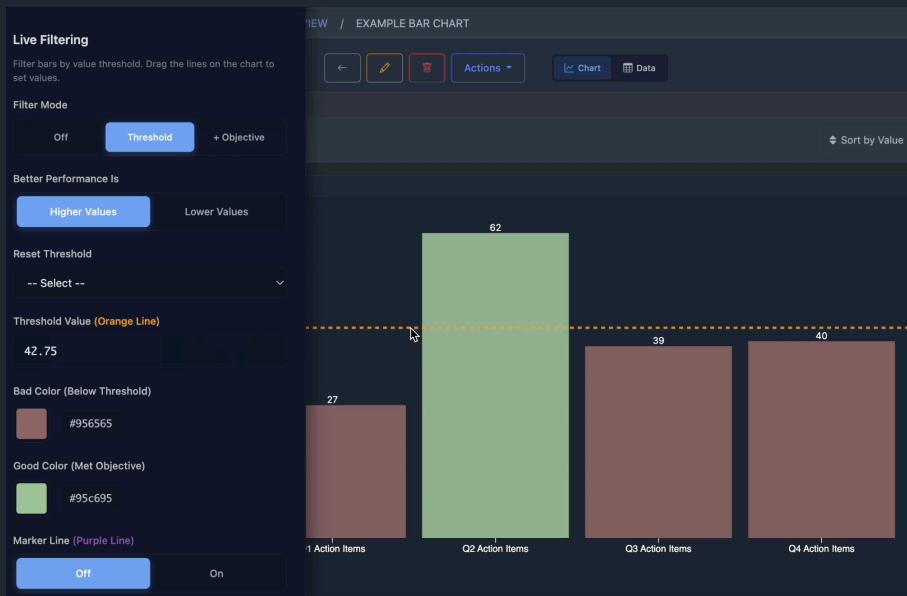
Interactive dashboards built for engineering data.

The visualization module (Viz) lets you create visualizations from model data, requirements, and project metrics using chart types optimized for systems engineering workflows, then organize them into dashboards your whole program can actually use.

## Capabilities

- **Multiple visualization libraries:** D3.js, Chart.js, and custom chart types built for engineering use cases.
- **Interactive dashboards with drill-down:** zoom, pan, filter, and follow the data wherever a question takes you.
- **Flexible data sources:** import from spreadsheets, pull from APIs, or connect directly to your model.
- **Shareable and embeddable:** distribute live views and embed charts in reports, briefings, and other tools.
- **Chart types that fit the work:** sunburst, scatter, bar, treemap, threshold/objective indicators, and more.

NAME	GRAPH TYPE	SOURCE
Example Line Chart	Line Chart	<input type="button" value="MANUAL"/>
Example Bar Chart	Bar Chart	<input type="button" value="MANUAL"/>
Example Pie Chart	Pie Chart	<input type="button" value="MANUAL"/>
Horizontal Bar Chart	Hbar Chart	<input type="button" value="MANUAL"/>
Cost vs Time	Line Chart	<input type="button" value="CAMERO"/>



## Why it matters

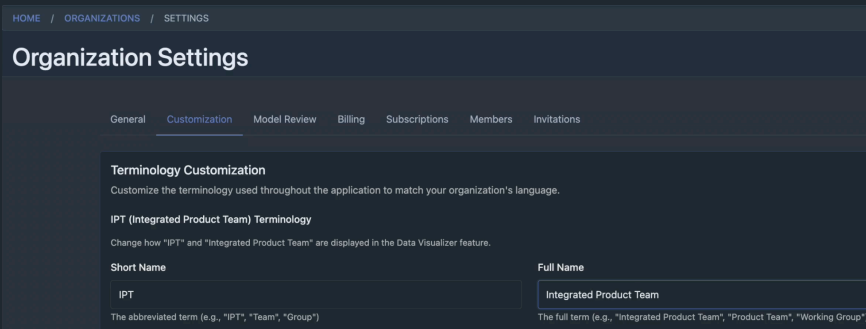
Engineering data is rarely "ready to plot." It comes from a model, a spreadsheet, a requirements tool, and a project tracker. The questions you need to answer change every week. Viz is built for that reality: connect your data, pick a chart that actually fits the question, and shape it until it tells the story cleanly.

The result is faster intuition. Instead of waiting for someone to build a one-off chart in a slide deck, your team gets live, interactive views that update as the underlying data does that anyone can drill into when they need a closer look.

## Built for the way engineers actually work

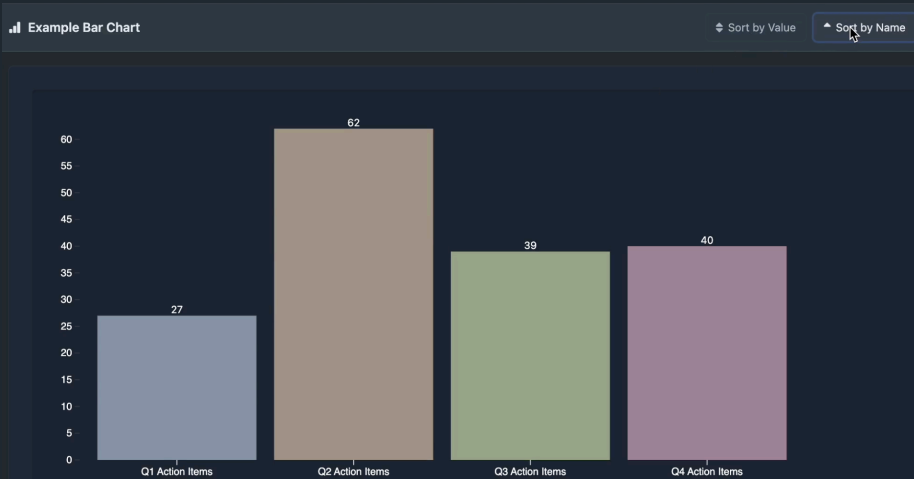
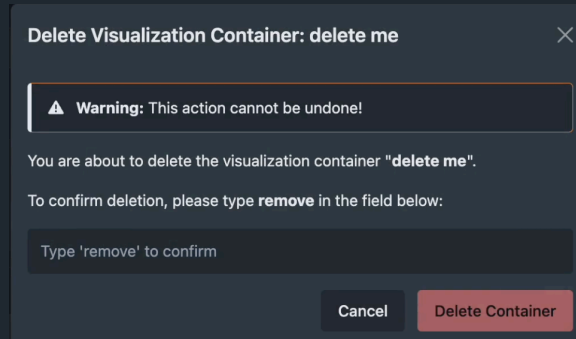
A lot of dashboard tools assume your data is clean and your terminology is fixed. Your customers expect flexibility. Viz is designed around the small ergonomics that make a tool usable day-to-day:

- **Threshold and objective coloring built in.** Red / yellow / green for below-threshold, below-objective, and above-objective values, letting you use the shorthand engineers already speak, available without scripting.
- **Filter visually.** Advanced visual filters turn a chart from a static picture into an analysis surface allowing you to narrow down to what matters, then export, share, or drill in.
- **Organize at the right level.** Containers group related visualizations. Inside a container, Teams and Sections give you layers of structure. A single dashboard can serve an entire program without becoming a wall of charts.



**Call things what you want to call them.**  
Teams, sections, and labels use your program's vocabulary, not ours.

**Iterate without fear.** Protected delete and confirmation patterns mean a misclick doesn't cost you a dashboard.



**Make it look right.** Sort and reorder data however you need. Pick the color order. Adjust labels when they overlap. The defaults are sensible; the controls are there when defaults aren't enough.

## Where it fits

Viz is the dashboard layer that ties the rest of the platform together. Plot model data captured by Delta Map. Surface metrics for a model review. Or stand it up on its own as the analysis hub for a program with charts, filters, and shareable views the whole organization can rally around.



**Viz. Gain intuition from your data.**

Contact us to get started.  
engineering@veyla.tech

